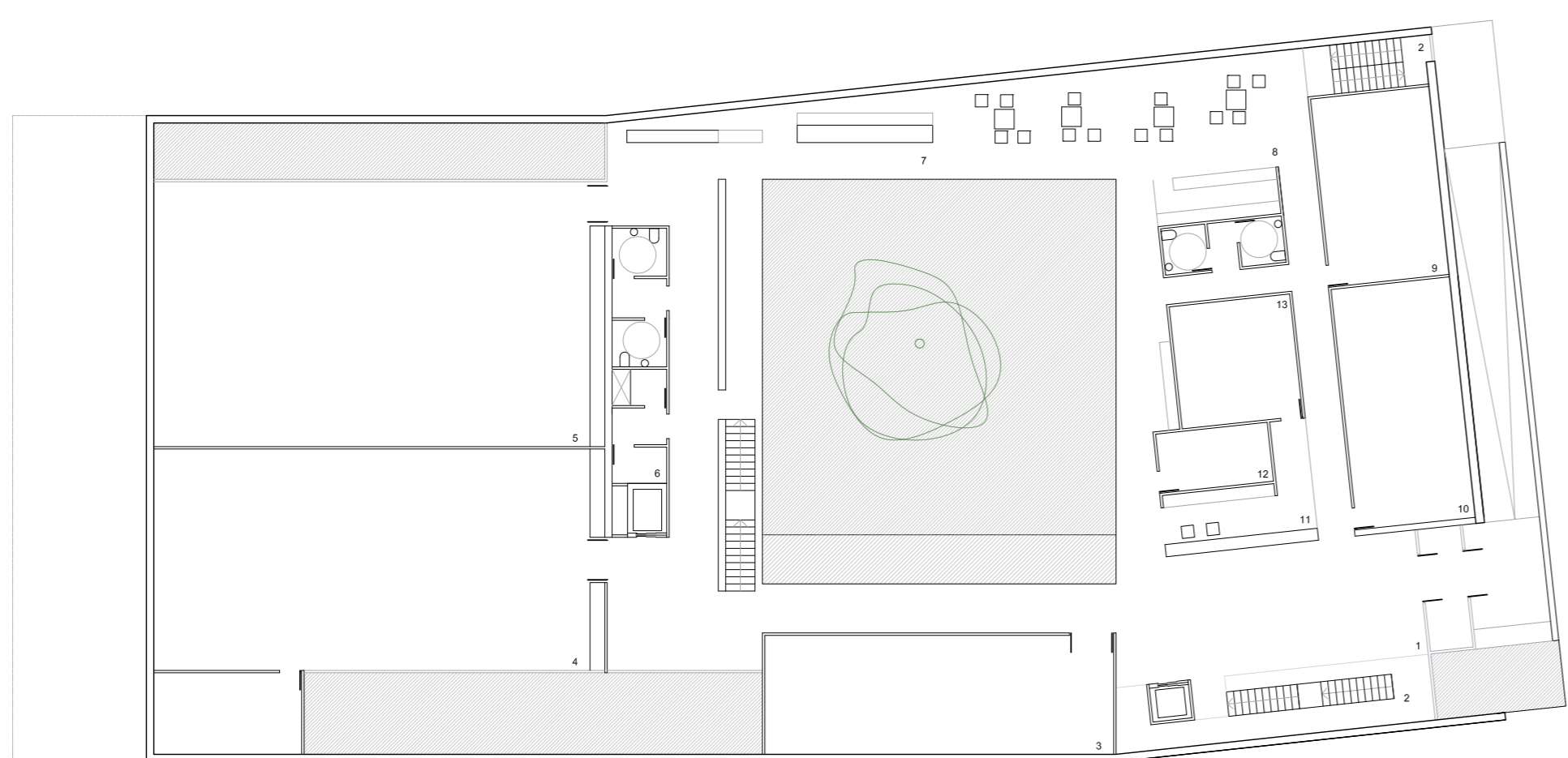
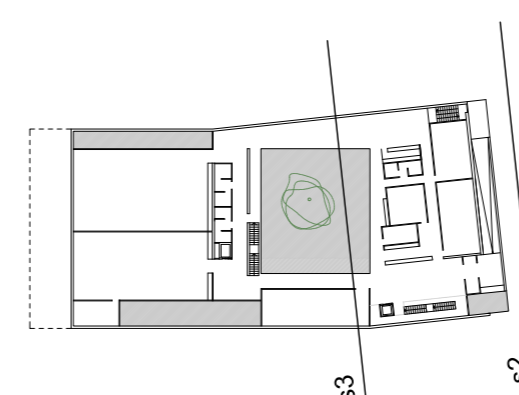
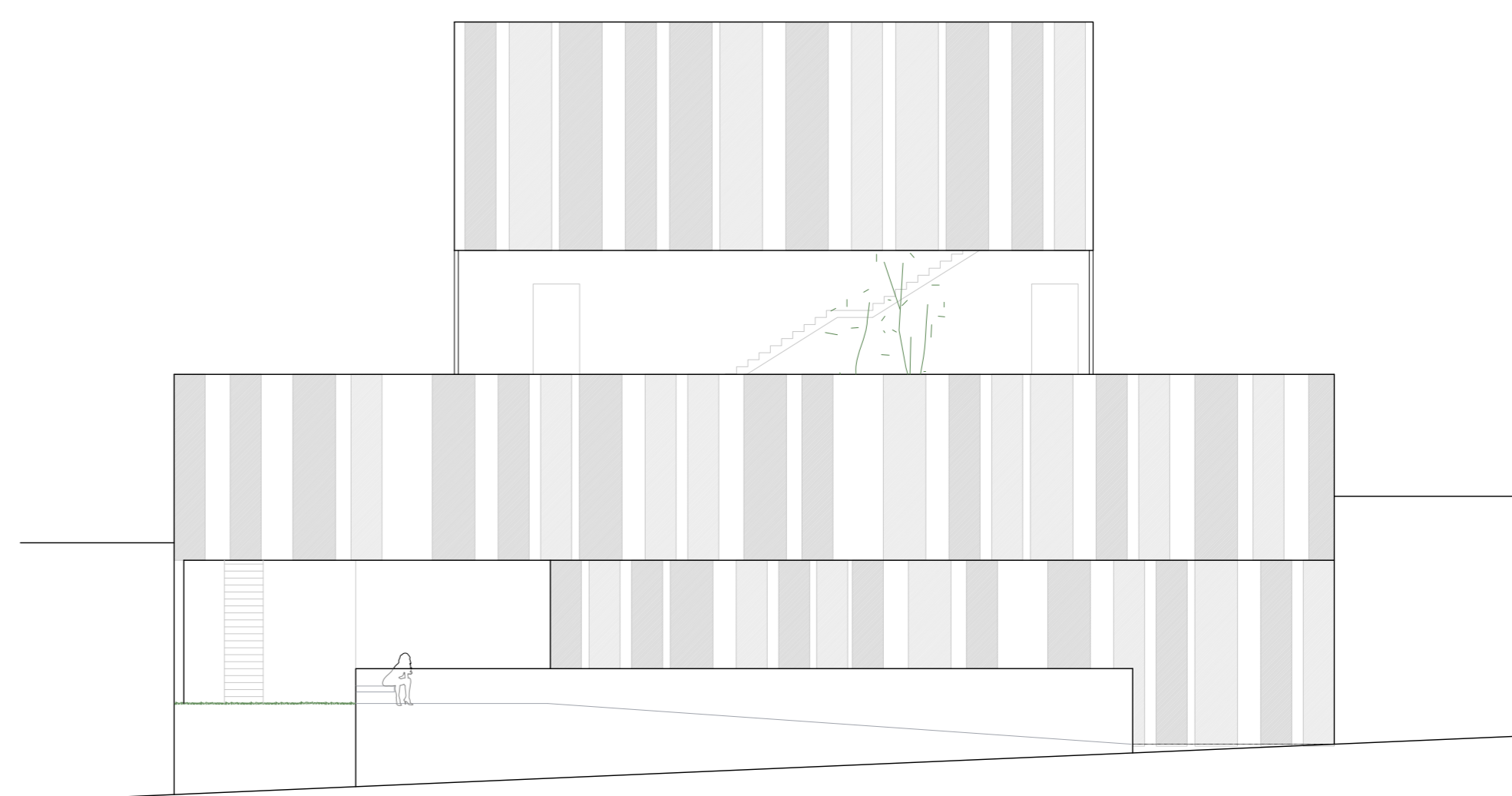
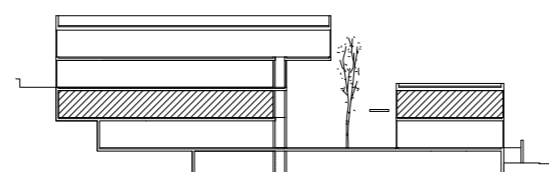
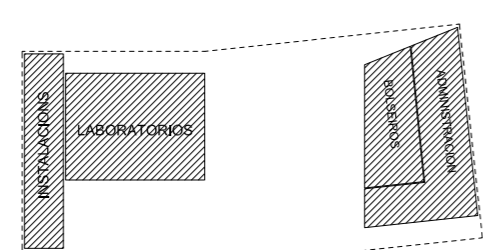




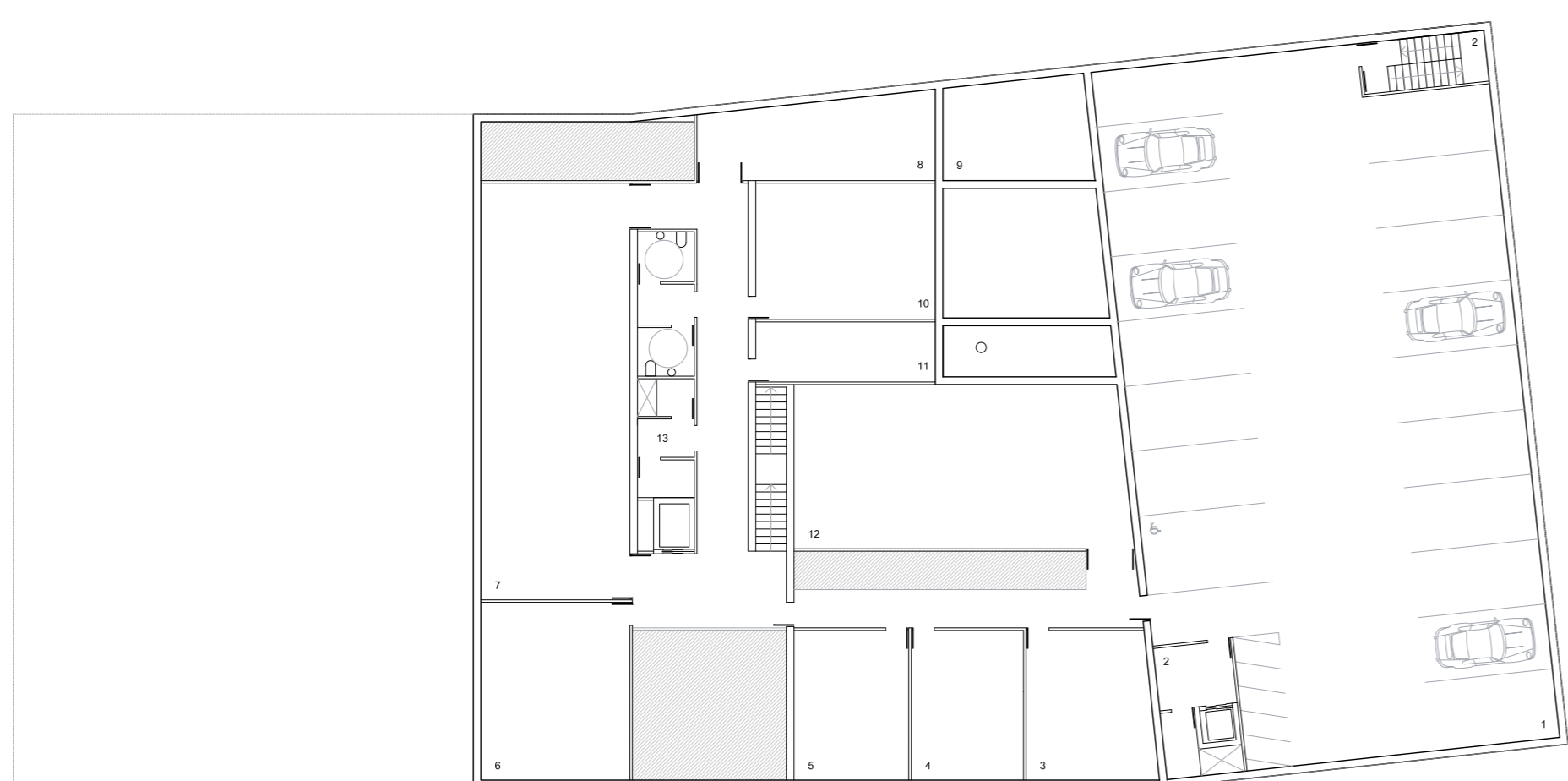
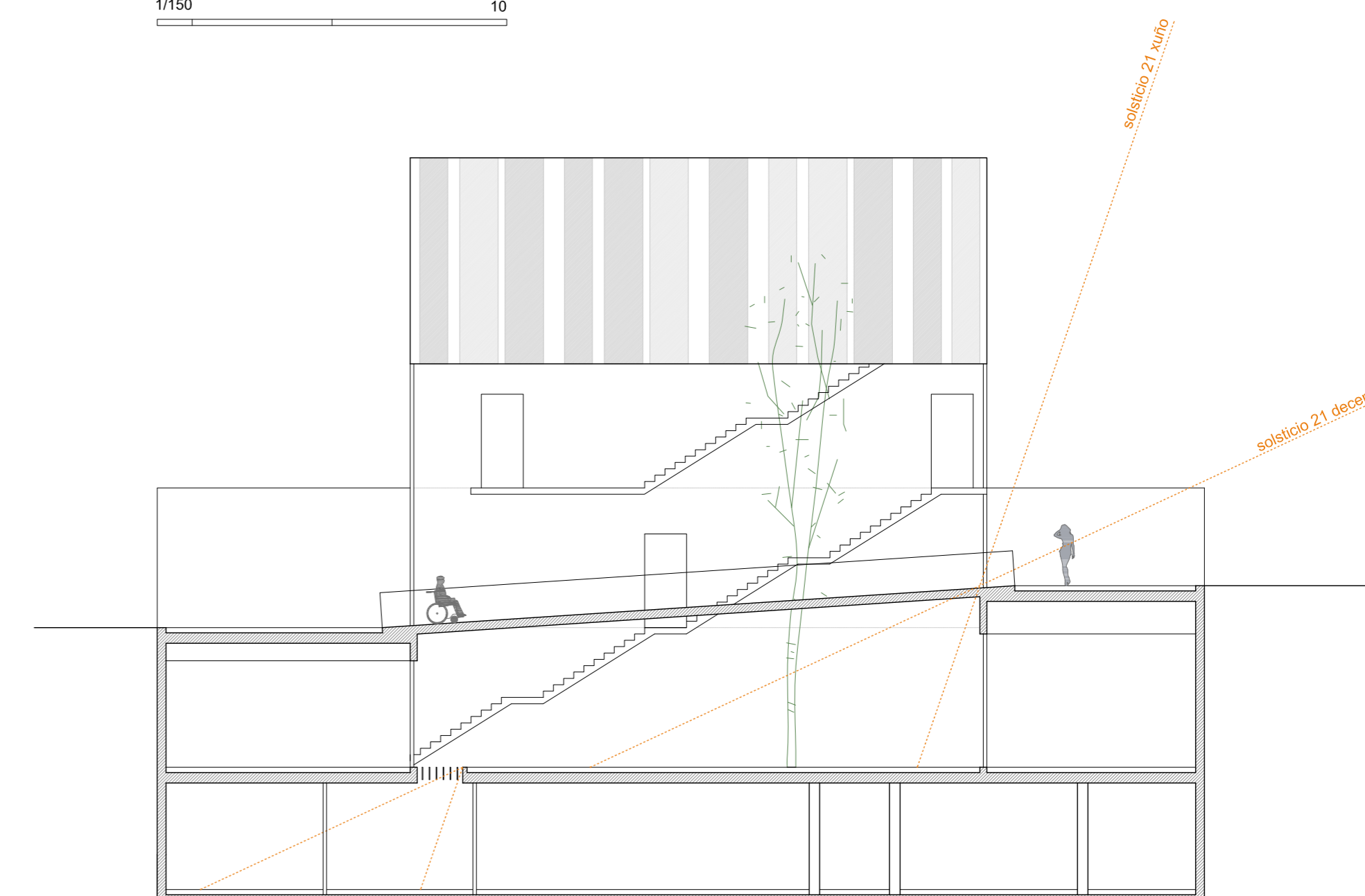
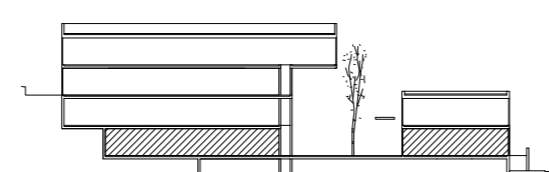
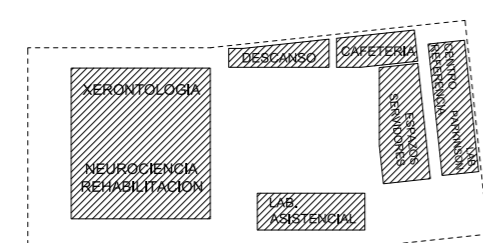
planta 1  
 cota +59.50

1. núcleo do volume baixo	35 m <sup>2</sup>
2. instalación	110 m <sup>2</sup>
3. laboratorio 1	87 m <sup>2</sup>
4. laboratorio 2	87 m <sup>2</sup>
5. máquina calzado de vista	87 m <sup>2</sup>
6. núcleo do volume alto	30 m <sup>2</sup>
7. secretaria	10 m <sup>2</sup>
8. despacho de coordinador	20 m <sup>2</sup>
9. sala de reunións	49 m <sup>2</sup>
10. administración	155 m <sup>2</sup>
superficie construída total	890 m <sup>2</sup>



planta 0  
 cota +55.50

1. vestíbulo	65 m <sup>2</sup>
2. núcleo do volume baixo	45 m <sup>2</sup>
3. laboratorio sensorial	75 m <sup>2</sup>
4. neurociencia rehabilitación	162 m <sup>2</sup>
5. laboratorio	100 m <sup>2</sup>
6. núcleo do volume alto	30 m <sup>2</sup>
7. sala de descanso	25 m <sup>2</sup>
8. sala de café e comida	50 m <sup>2</sup>
9. centro de referencia	45 m <sup>2</sup>
10. laboratorio parálison	45 m <sup>2</sup>
11. recepción	15 m <sup>2</sup>
12. almacen recepción	11 m <sup>2</sup>
13. sala de reunións	25 m <sup>2</sup>
superficie construída total	1.085 m <sup>2</sup>



planta -1  
 cota +52.00

1. garaxe	445 m <sup>2</sup>
2. núcleo do volume baixo	25 m <sup>2</sup>
3. laboratorio gatto	25 m <sup>2</sup>
4. sala de electros	25 m <sup>2</sup>
5. laboratorio rata	25 m <sup>2</sup>
6. entrada	40 m <sup>2</sup>
7. residencia magnética	95 m <sup>2</sup>
8. taller de mantemento	29 m <sup>2</sup>
9. alacén	68 m <sup>2</sup>
10. almacen 2	37 m <sup>2</sup>
11. cuarto de bombas	17 m <sup>2</sup>
12. almacen 1	13 m <sup>2</sup>
13. núcleo do volume alto	30 m <sup>2</sup>
superficie construída total	1.045 m <sup>2</sup>

